



PLAYERS' HANDBOOK

2015 BULA & WFDF WORLD CHAMPIONSHIPS OF BEACH ULTIMATE, DUBAI, UAE



TABLE OF CONTENTS

Welcome	1
Map	3
Program	7
Tournament	9
Behavior and cultural sensitivities	13
Important contacts	15
Meetings and events	21
Using the Internet	22
Venue	23
Medical information/Physios	26
Transportation and getting around	27
Food	32
Tagging pictures, posts and codes	33
Event coverage	34
Downloads	35



Supported by



مجلس دبي الرياضي
DUBAI SPORTS COUNCIL

WELCOME



WFDF President Welcome Message

To all participants in the 2015 WCBU:

On behalf of the World Flying Disc Federation, I would like to welcome all athletes, coaches, staff, supporters, and spectators to Dubai, United Arab Emirates, for the BULA/WFDF 2015 World Championships of Beach Ultimate (WCBU). We are confident you will find that the shores of the Jumeirah Beach in Dubai are the perfect setting for these premier Beach Ultimate Championships.

WFDF is excited to see over 70 teams from 25 countries and more than 1,000 players participating in this year's WCBU, competing in the Open, Women's, Mixed, Grandmasters, Open Masters, Women Masters and Mixed Masters divisions. This level of participation builds on the success of the last couple Beach Ultimate events co-hosted by BULA and WFDF, with the 2013 European Championships of Beach Ultimate in Calafell, Spain and the 2011 World Championships of Beach Ultimate in Lignano Sabbiadoro, Italy.

We are also looking forward to showcasing Beach Ultimate with the introduction of the first SportAccord World Beach Games which is expected to be held in 2017. We expect details to be released at the upcoming SportAccord Convention next month in Sochi, Russia.

WFDF would like to thank all those who made this championship event happen. In particular, we appreciate all the efforts of the Tournament Organizing Committee led by Patrick Fourcample-Maye, our member association in the UAE, United Arabian Ultimate, as well as BULA President and WFDF Beach Ultimate Committee Chair Patrick van der Valk. All of them and their teams have done their utmost to prepare a special event for all participants.

This is a notable event for WFDF as the first flying disc world championship held in the Middle East and we are sure that the extremely reliable sun in Dubai as well as its broad beaches will complement what should be a great cultural experience for all. We wish all teams competitive success and hope that you have an enjoyable tournament, with great memories that will last for years to come!

Very truly yours,

Robert 'Nob' Rauch
WFDF President



BULA President Welcome Message

Hello Beach Ultimate Lovers!

On behalf of BULA, I am delighted to welcome you to Dubai for the 2015 BULA & WFDF World Championships of Beach Ultimate hosted and organized by United Arabian Ultimate and supported by the Dubai Sports Council.

Many of you have traveled long distances and spent your holiday time and money to be here and be a part of this top level Beach Ultimate event. You are proof that intense play, with minimal physical contact, is possible in a self-refereed sport by knowing the rules, being fair-minded, and enjoying the game! Your presence here is truly a celebration of healthy competition where men and women can compete on equal terms and aim to win the gold medal.

It is important to recognize that these championships have been made possible by great efforts from many individuals. Many of you have contributed long hours and days to organize teams, divisions, and even national disc federations, while others worked hard to create the best event possible. I have no doubt that all this dedication and time will result in a unique experience for players, supporting staff and guests.

Thank you all! It is great to see how the sport continues to grow while maintaining a (global) community spirit. I am looking forward to spending some time with you over the next week.

Good luck, enjoy yourself, and see you on the beach!

Patrick van der Valk

President - BULA Beach Ultimate

Chairman - WFDF Beach Ultimate Committee

Chairman - WFDF Spirit of the Game Committee

Welcome from United Arabian Ultimate

ومرحبا بكم في دبي

Welcome to Dubai.

On behalf of the Local Organising Committee and the Ultimate community in the UAE we are delighted to see so many teams from so many countries in Dubai for WCBU2015. It is an honour to be hosting you. We want you to have the very best of times here in the UAE so if there is anything we can do to assist, please come and find me or one of the team. I can promise we'll do our very best.

Patrick Fourcampré-Maye

Tournament Director

President - United Arabian Ultimate



LEGEND

FIELD

no.

- FIELD NUMBER



- SHUTTLE PICK-UP/DROP-OFF

05

SC

- SHOWCASE FIELD

01

- VOLUNTEER TENT

06

W

- WARM-UP AREA

02

- MERCHANDISE TENT



- TOILETS

03

- FAMILY TENT

P

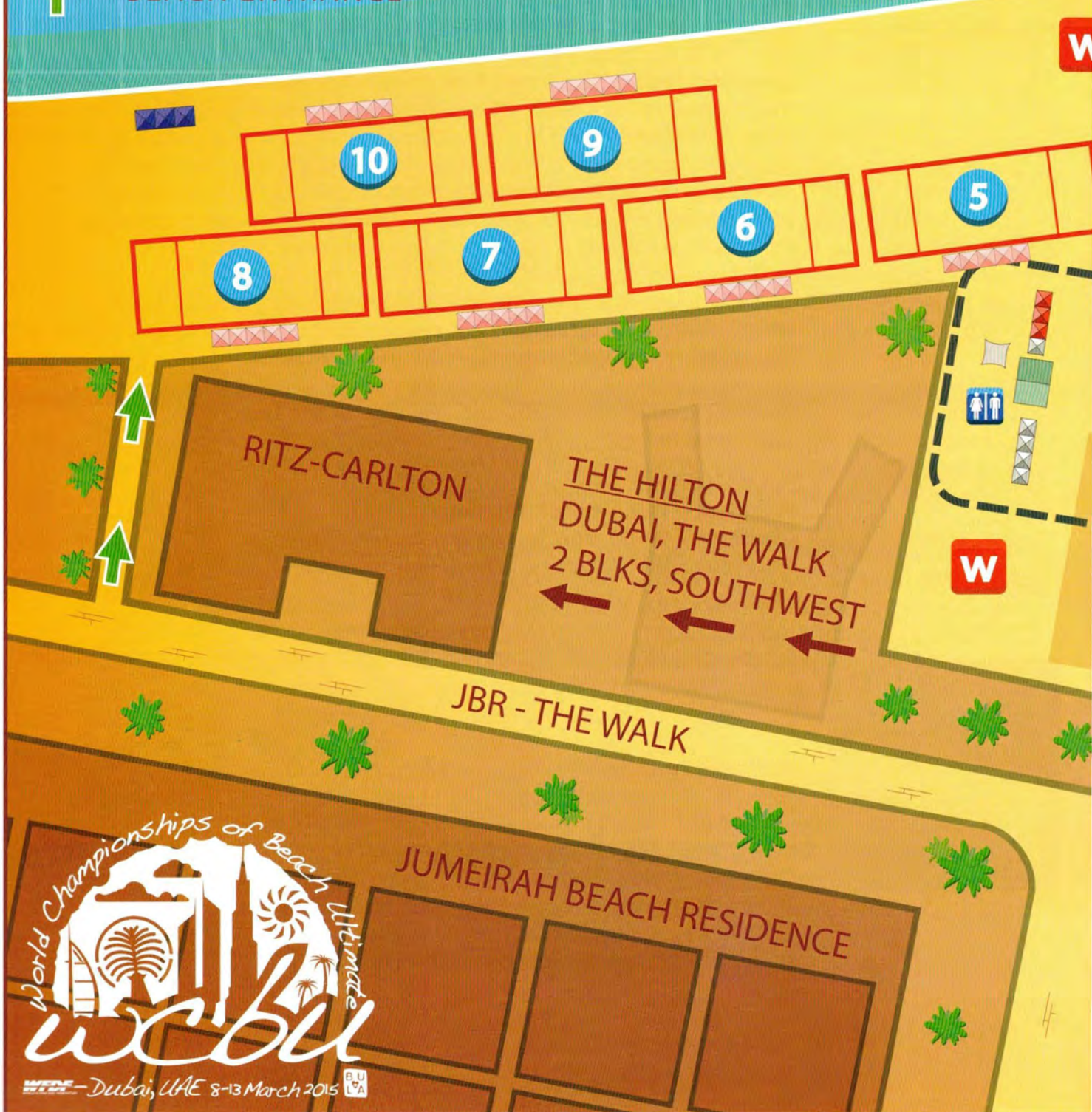
- PARKING

04

- INFORMATION & MEDIA TENT



- BEACH ENTRANCE



D BULL TENT

EAL COLLECTION &
TNER TENTS

ATER / RUBBISH BIN
VOLUNTEER SHADE

AWAKE, MARINE
WATERSPORTS



THIS IS NO TIME TO DREAM SMALL.



You've worked for months or even years to set foot on a beach in a small Middle Eastern country, and not many people outside your sport can even begin to understand why you did it. But now the doubters are behind you, and the mountains of time you've sunk into training have all come down to the effort

you can sink into the sand. You'll work your tail off each point because you've only got five days on this ride and then you go back home with nothing greater than a sense of accomplishment and sand in places you don't want it.



06

Friday

**4 P.M.
TO
8 P.M.**

REGISTRATION OPEN
[HILTON DUBAI THE WALK](#)

EARLY REGISTRATION WILL BE OPEN FOR LIMITED HOURS ON FRIDAY.

*TEAM CAPTAINS, PLEASE BRING MONEY TO REGISTRATION TO RECONCILE ANY DIFFERENCES FROM CURRENCY CONVERSION OR ADDING PLAYERS TO TEAM ROSTERS.

07

Saturday

**10 A.M.
TO
5 P.M.**

REGISTRATION OPEN
[HILTON DUBAI THE WALK](#)

*TEAM CAPTAINS, PLEASE BRING MONEY TO REGISTRATION TO RECONCILE ANY DIFFERENCES FROM CURRENCY CONVERSION OR ADDING PLAYERS TO TEAM ROSTERS.

**1 P.M.
TO
5 P.M.**

RISE UP HANDLER OFFENSE AND THROWING SKILLS SESSION
[JBR BEACH](#)

THE 4-HOUR NON-PHYSICALLY INTENSIVE SESSION WITH COACH MARIO O'BRIEN WILL DEMONSTRATE THE PRINCIPLES OF HANDLER OFFENSE AND ASSOCIATED THROWING SKILLS. PRE-REGISTRATION WAS REQUIRED. CONTACT ALEX NISWANDER AT ALEX.NISWANDER@GMAIL.COM WITH ANY QUESTIONS.

08

Sunday

09

Monday

10

Tuesday

7 A.M.

INTERNATIONAL WOMEN'S DAY

8 A.M.

LATE REGISTRATION
REGISTRATION TENT
JBR BEACH

9 A.M.

10 A.M.

11 A.M. TO 1:30 P.M.
LUNCH COLLECTION
HILTON HOTEL

11 A.M.

CAPTAINS' MEETING
MEET AT HILTON HOTEL

NOON

SPIRIT CAPTAINS' MEETING
MEET AT HILTON HOTEL

1 P.M.

PLAYER GATHERING AND
PHOTO SHOOT
MEET AT HILTON HOTEL

2 P.M.

OPENING CEREMONY
JBR BEACH ARENA

3 P.M.

FIRST GAME
USA WOMEN V
GERMANY WOMEN
JBR BEACH ARENA

4 P.M.

5 P.M.

6 P.M.

AFTER THE FIRST GAME
OPENING NIGHT PARTY
BARASTI BEACH BAR

7 P.M.

8 P.M.

9 P.M.

10 P.M.

BUSES TO FIELDS FROM
SELECTED HOTELS RUN
FROM 6:45 A.M.ALL THE GAMES TO WATCH
WILL BE PLAYED AT
JBR BEACH ARENAGAME TO WATCH
GERMANY V PHILIPPINES
OPENGAME TO WATCH
NETHERLANDS V
UGANDA
MIXEDGAME TO WATCH
AUSTRALIA V FRANCE
OPENGAME TO WATCH
CANADA V RUSSIA
WOMENGAME TO WATCH
KENYA V UAE
OPENGAME TO WATCH
IRELAND V JAPAN
MIXED11 A.M. TO 1:30 P.M.
EVERY DAY
LUNCH COLLECTION
ATHLETE'S VILLAGEGAME TO WATCH
GREAT BRITAIN V
JAPAN
OPENGAME TO WATCH
USA V CANADA
OPENGAME TO WATCH
CANADA V SWEDEN
MIXED

GAMES ONGOING 9 A.M. TO 6 P.M.

GAMES ONGOING 8 A.M. TO 6 P.M.

TOURNAMENT PARTY AND
TRADE NIGHT
BARASTI BEACH BAR
THEME: BEACH PARTYWFDF COACHING AND
DEVELOPMENT WORKSHOP
WAVEBREAKER RESTAURANT
HILTON HOTEL
BY INVITATION ONLYLAST BUSES FROM THE FIELDS
TO SELECTED HOTELS WILL
DEPART AT 6:30 P.M.

11

Wednesday

12

Thursday

13

Friday

7 A.M.

BUSES TO FIELDS FROM
SELECTED HOTELS RUN
FROM 6:45 A.M.

8 A.M.

GAME TO WATCH
PHILIPPINES V CANADA
OPEN MASTERS

9 A.M.

10 A.M.

GAME TO WATCH
INDIA V GERMANY
OPEN

11 A.M.

GAME TO WATCH
GREAT BRITAIN V
GERMANY
WOMEN

NOON

1 P.M.

2 P.M.

3 P.M.

GAME TO WATCH
PORTUGAL V RUSSIA
MIXED

4 P.M.

5 P.M.

GAMES ONGOING 8 A.M. TO 6 P.M.

GAME TO WATCH
MIXED SEMIFINALS

GAME TO WATCH
OPEN SEMIFINALS

3:15 P.M.
GAME TO WATCH
WOMEN MASTERS
FINAL

4:30 P.M.
GAME TO WATCH
MIXED MASTERS
FINAL

5:30 P.M.
MEDAL CEREMONY

GAMES ONGOING 8 A.M. TO 6 P.M.

FINALS

10:15 A.M.
GRANDMASTER
FINALS

11:30 A.M.
OPEN MASTERS
FINALS

12:45 P.M.
WOMEN FINALS

2 P.M.
OPEN FINALS

3:15 P.M.
MIXED FINALS

4:30 P.M.
CLOSING CEREMONY

ALL FINALS WILL BE PLAYED AT JBR ARENA

6 P.M.

LAST BUSES FROM THE FIELDS
TO SELECTED HOTELS WILL
DEPART AT 6:30 P.M.

7 P.M.



TOURNAMENT PARTY
SOCIETE
MARINA BYBLOS HOTEL
THEME: RUBIK'S CUBE

8 P.M.

TOURNAMENT PARTY
SOCIETE
MARINA BYBLOS HOTEL

9 P.M.

10 P.M.

MARCH 14
RISE UP
COACHING
CLINIC

TOURNAMENT

WELCOME TO DUBAI!

نرحب بكم في دبي!

We are honored to be hosting teams from nearly 25 countries in the United Arab Emirates for the BULA and WFDF World Championships of Beach Ultimate 2015. In addition to six days of glorious Ultimate on the shores of the Arabian Gulf, players and guests can look forward to stunning sunsets, amazing parties and the chance to explore one of the most-visited cities in the world.

Everything you need to know about the tournament - from weather considerations and game times to special offers - can be found on these pages. But if you still can't find what you are looking for, grab a volunteer or flag down a staffer. We're here to help.

See you on the beach!

LOCATION



All games will be played at Jumeirah Beach Residence (JBR) Beach. Players staying at the Holiday Inn can take shuttle buses to the pitches each morning. The nearest Metro stop is Damac Properties station, about a 15-minute walk to the beach. The nearest tram station is Jumeirah Beach Residence 1, a 5-minute walk. For more transport information, see page 27.

WEATHER

It's hot in the UAE. Please make sure you stay hydrated and limit sun exposure during the middle of the day. Wear sunscreen, hats and sunglasses as often as possible. Minimize the risk of dehydration and heat exhaustion by ensuring you drink regularly whether you are playing or not and staying in the shade as often as possible.

The sand can get hot during the afternoon. We recommend wearing socks or sandsocks to protect your feet.

Water stations are located at each of the ten pitches.

The average temperature in Dubai in March is 25°C/77°F.

Rain, thunderstorms and lightning are extremely rare in Dubai, though sandstorms are a possibility. Games will continue unless weather conditions become too dangerous. The WFDF Tournament Technical Director, Patrick van der Valk, will declare weather-related game stoppages and these will also be posted online and at the main information tent in the Athlete's Village.

ON THE BEACH

Please make sure you clean up after yourself on the beach. In an effort to reduce the environmental impact of the tournament, we are partnering with Green Truck, a local company, that will deliver the recyclables to specialized UAE-based factories to be used as raw materials for production. Trash cans will be available at each pitch but please use the recycling stations set up at three locations on the beach when possible.

The UAE has strict alcohol laws. No obvious alcohol bottles are allowed on the beach, but hotels immediately outside the venue on JBR Walk serve alcohol. The XL Beach Club at the Habtoor Grand Beach Resort and Wavebreaker at the Hilton are both a short distance from the pitches.

WiFi will be available on the beach. For more information on internet use, see page 22.

SeaWake is Dubai's premier marine and watersports company located right on JBR Beach, and it's run by one of the UAE's Grandmaster players. Registered players, guests and staff get a 25% discount on listed prices. Conditions apply for some offerings. You can see more information and prices here: <http://seawake.ae>

Selected Price List for SeaWake Activities

Activity	Duration	Price
Kayak (1 or 2 persons)	1 hour	Dh100 for 1, Dh150 for 2
Paddle Board or Body Board	1 hour	Dh100
Wakeboarding/Water skiing/Wake skate/Kneeboarding	20 minutes	Dh250 per person
Wake surfing	20 minutes	Dh250 per person
Big Mable ride/donut	15 minutes	Dh150 per person (min. 2, max. 4)
Banana boat	15 minutes	Dh100 per person (min. 3, max. 6)
Instructor: Wake boarding, waterskiing, wake surfing	30 minutes	Dh200
Charter Boat Cruise	1 or 2 hours	Dh800 for 1 hour, Dh1,500 for 2 hours
Deep sea fishing	4 hours	Dh2,600 for max. 6, plus Dh200 additional, max. 8

ANTI-DOPING

WFDF Anti-Doping rules apply and doping is strictly prohibited. For more information on the anti-doping policy, visit <http://www.wfdf.org/anti-doping>.

TOURNAMENT WRISTBANDS

Every WCBU2015 participant will receive a wristband when they register. The wristband must be worn for all six days of competition. It will be used to identify players on the field, for lunch pickup and for entrance to tournament parties.

Those with a **red** wristband can use the shuttle bus to selected hotels for free.

If you misplace your wristband, please report to the Athlete's Village for a replacement.

VOLUNTEERS

Volunteers will be on the pitches during the day to assist players and guests all six days of the tournament. From scorekeeping and pitch checks to water delivery and trash collection, the volunteers are here to keep things running smoothly. They can easily be identified by their jerseys, conveniently emblazoned with the word "Volunteer" on the back. If in need, track one down.

Volunteers are a vital part of the tournament team, and without them our event would not be possible. Please seek them out for whatever you need, but treat them with kindness and respect.



Volunteer responsibilities include physio and first aid, IT, lost and found, score and time keeping, transport, directing teams, pitch maintenance, ice, water and food distribution, maintaining site cleanliness, technical issues, media coordination, and team assistance. Some volunteers are also available to answer questions about Dubai and the UAE as well as some basic tourism information and cultural considerations.

Even if the volunteers don't know how to help, they'll know how to find someone who does.

SOCIAL EVENTS

After hours of extraordinary feats of athleticism on the hot sand during the day, it'll be time to kick back and relax at night. A social event will run most nights of WCBU2015, with promotions for tournament athletes at each venue. For the nights without specified events, we can point you in the direction of the best local watering holes. Contact Andrea at entertainment@wcbu2015.com with any questions.

Sunday, March 8: Opening Ceremony, JBR Beach Arena - Meet at the Hilton Hotel

Players should gather at the Hilton Hotel at 1 p.m. ahead of the Flag March for all attending nations. Please wear your team uniforms. The Opening Ceremony will begin at the Arena at 2 p.m. and will feature team photos, speeches and camels.

Welcome Party, Barasti Beach Bar

Happy hour runs from 6 p.m. to 9 p.m. Teams should wear their country colors. This low-key first night affair will feature beer pong and Jumbo Jenga, so bring your A game.

Monday, March 9: Beach Party and Trade Night, Barasti Beach Bar

After 7 p.m. at Dubai's infamous nighttime hotspot, guests get 40 percent off on selected beverages, including spirits, beers, wine and cocktails. Wear your classiest Hawaiian garb or we will judge you mercilessly.

Tuesday, March 10 and Wednesday, March 11: Check out the local hotspots

The trick to cheap/free drinks in Dubai is hitting up the local establishments that offer Ladies Night specials. We recommend Barasti, Cargo at Marina Mall's Pier 7 or the Yacht Club - all of which are within a 10-minute cab ride of JBR Beach.

Other hotels with specials within walking distance of the beach are the Hilton, the Habtoor Grand, Grosvenor House and the Mövenpick.

Thursday, March 12: Societe, Marina Byblos Hotel, Dubai Marina

The night club will be open exclusively to Ultimate players from 7:30 p.m. to 11 p.m., with 25 percent off drinks until 11 p.m. The club remains open until 3 a.m.

The theme of the night will be Rubik's Cube. Players should come dressed in multiple colors with the aim of being only one color by the end of the night. There is a dress code at Societe - no beach wear.

Friday, March 13: Closing Ceremony, JBR Beach Arena

The 2015 edition of the World Championships of Beach Ultimate will close with speeches and an award ceremony.

Societe, Marina Byblos Hotel, Dubai Marina

As the night before, Societe will be open for WCBU players exclusively from 7:30 p.m. to 11 p.m. Drinks will be 25 percent off until 11 p.m. Winning teams will receive one free bottle of vodka. The club remains open until 3 a.m.

BEHAVIOR AND CULTURAL SENSITIVITIES

Dubai and the United Arab Emirates are probably unlike anywhere you've ever been before. A wide expanse of empty desert lies just beyond where the shadow of the world's tallest building ends, and extreme wealth and extreme poverty can be witnessed on the same street block. The UAE has grown rapidly into one of the world's leading business and tourism hubs, despite being founded less than 50 years ago.

The culture here may be very different from what you are used to. Our host country prides itself on promoting tolerance and acceptance among its population, which is composed of more than 200 nationalities, but the UAE is still a Muslim country and its local laws and traditions should be respected during your stay.

Dubai boasts more than 11 million visitors a year, so Western culture is familiar and commonplace. However, it is advised to follow these guidelines during your time in the UAE.

ATTIRE

Women are not required to cover their hair or faces. In the UAE, women's attire ranges from full coverage abayas and shaylas for local women to brightly colored headscarves and jeans for some Muslim women to miniskirts for Westerners. Bikinis and other beachwear are more than acceptable on JBR Beach.

Many members of the local Ultimate community play on JBR Beach in bathing suits and sports bras. On the beach itself, almost anything goes, so do not feel you must be covered up when practicing or warming up on the beach.

Visitors are expected to respect local traditions and avoid offending the local population. On the streets and in public spaces, particularly malls, visitors are requested to wear clothing that covers the shoulders and knees.

There is rarely a dress code at bars and nightclubs for women - in fact, you may find that you feel overdressed in comparison to the local crowd. For men, however, long pants and closed-toed shoes must be worn, or clubs (including Societe at the Marina Byblos Hotel) will not allow you to enter.

Modest and loose-fitting clothing must be worn in mosques, with ankles, wrists and hair covered for women. Transparent or tight clothes, offensive logos and swimwear are not allowed. A headscarf and abaya are often provided in the UAE, particularly at the Sheikh Zayed Grand Mosque in Abu Dhabi.

Shorts are not allowed for women or men at mosques. Shoes cannot be worn inside. Holding hands, kissing, or even touching to pose for a photo with a member of the opposite sex is considered offensive in a mosque.

DRUGS AND ALCOHOL

The UAE has a no tolerance policy for drugs. Penalties for possession of even residual amounts of drugs, including marijuana, can be severe.

Dubai has a thriving nightlife and alcohol is widely available at restaurants, bars and night-clubs. Drinking outside of these licensed establishments is illegal. While there is a legal requirement for tourists to obtain a license to drink alcohol, it is extremely rarely enforced. **Do not drink openly on the beach.** Numerous beachside bars are a short walk from the pitches.

Some prescribed and over the counter medicines that are available in other countries are considered to be controlled substances in the UAE. Any such medication is not allowed into the UAE without prior permission from the UAE Ministry of Health. A doctor's prescription should be carried along with any medication that is brought into the country.

CULTURE

Public displays of affection are considered offensive. Sex outside of marriage and homosexuality are also illegal, though prosecution of these offenses is very rare, especially among tourists and Western expatriates. That being said, hand-holding and kissing are not uncommon, particularly in the more tourist-heavy areas.

“Offensive behavior” – including swearing, rude gestures and insults – can land you in trouble with the law. Please be respectful of the local culture and avoid using obscenities or offensive gestures.

In recent years, some tourists have found themselves on the wrong side of the law for taking photographs of restricted areas. In Dubai, this is less common than in Abu Dhabi, and these areas will typically be sign-posted. Generally, military areas, palaces, courts, government buildings and certain bridges should be avoided. You should also ask for permission before photographing people in the UAE, even if they are in a public place.



IMPORTANT CONTACTS

TOURNAMENT CONTACTS

Duty Phone
24-hour LOC contact
+971 (0)55 903 8654

Patrick Fourcampré-Maye
Tournament Director
+971 (0)50 815 1323

Craig Anderson
Accommodation
+971 (0)56 494 6095

Dan Danzoy
Field Services
+971 (0)52 987 7870

Andrea Bombala
Entertainment
+971 (0)50 559 2199

Adna Muliawan
Registration
+971 (0)56 269 0101

Jen Thomas
Media
+971 (0)55 800 3547

Volker Bernardi
WFDF Executive Director
+971 (0)52 596 9173

Pedro Vargas
BULA Director
+971 (0)52 596 9179

Patrick van der Valk
WFDF Tournament Technical Director
and Partnerships
+971(0)52 596 9176

Shiellah Quintos
Volunteers
+971(0)52 596 9178

Richard Moore
Spirit of the Game
+971(0)55 721 6284

Bruno Gravato
Technology
+971(0)55 982 9706

EMERGENCY CONTACTS

Police - Emergency
999 (from anywhere in the
UAE)

Dubai Police Call Centre
901

Dubai Police (non-emergency)
+ 971 04 609 6999

Dubai Police BlackBerry Pin
27875985

Ambulance
998

Fire
997

Dubai Coast Guard
800 4806

Dubai Municipality
800 900, + 971(0)4 221
5555

Dubai Municipality BlackBerry
(BB) Pin
217A8EDE

**Al Quoz, Al Barsha,
Bur Dubai, Deira,
Dubai Marina, Garhoud,
Jumeirah, Jebel Ali, Karama,
Mirdif, Nad Al Sheba,
Oud Metha, Palm Jumeirah,
Rashidiya, Umm Suqeim...**

**We love
Dubai**

KNOW YOUR CITY
LOVE YOUR CITY

timeoutdubai.com

Follow us  @timeoutdubai #welovedubai

Like us  /timeoutdubai



EMBASSIES AND CONSULATES

AUSTRALIA

Australian Embassy in Abu Dhabi
8th Floor, Al Muhairy Center
Sheikh Zayed the First Street
+ 971 (0)2 401 7500
abudhabi.embassy@dfat.gov.au

Australian Consulate-General in Dubai
Level 25, Burjuman Business Tower
Sheikh Khalifa bin Zayed Road
+971 (0)4 508 7100
consular.dubai@austrade.gov.au

CANADA

Embassy of Canada in Abu Dhabi
Abu Dhabi Trade Towers (Abu Dhabi Mall),
West Tower, Floors 9 and 10
+971 (0)2 694 0300
abdbi@international.gc.ca

Consulate General of Canada in Dubai
19th Floor, Jumeirah Emirates Towers
Sheikh Zayed Road
+971 (0)4 404 8444
dubai@international.gc.ca

CZECH REPUBLIC

Embassy of the Czech Republic in Abu Dhabi
Corniche Plaza Building, Salam Street, Tourist
Club Area
+971 (0)2 678 2800
abudhabi@embassy.mzv.cz

DENMARK

The Royal Danish Embassy in Abu Dhabi
Villa 2, Al Nahyan Camp, Defense Road
+971 (0)2 441 0104
auhamb@um.dk

The Royal Danish Consulate General in Dubai
Villa No. 208, Umm Suqueim 2
Al Thanya Road, Al Beteel Street
+971 (0)4 348 0877
dxbgkl@um.dk

FINLAND

Embassy of Finland in Abu Dhabi
12th Floor, Al Masood Tower
Hamdan bin Mohammed St
+971 (0)2 632 8927
sanomat.abo@formin.fi

FRANCE

Ambassade de France à Abou Dabi
Etihad Towers, Tower 3, Floor 22
+971 (0)2 813 1000
contact@ambafrance.ae

Consulat général de France à Dubaï
Habtoor Business Tower, 32nd floor
+971 (0)4 408 4900
consulat.dubai-fslt@diplomatie.gouv.fr

GERMANY

Embassy of Germany in Abu Dhabi
Abu Dhabi Trade Towers (Abu Dhabi Mall)
West Tower, Floor 14
+971 (0)2 596 7700, +971 (0)2 596 7777
Emergency: +971 (0)50 621 6291

Consulate General of Germany in Dubai
Jumeirah I, Street 14A
+971 (0)4 349 8888
Emergency: +971 (0)50 650 4134

INDIA

Embassy of India in Abu Dhabi
Plot No. 10, Diplomatic Area
Off Airport Road
+971 (0)2 449 2700
info@indembassyuae.org

Consulate General of India in Dubai
Al Hamriya, Diplomatic Enclave
+971 (0)4 307 0782
cgidubai@cgidubai.com

IRELAND

Embassy of Ireland in Abu Dhabi
2 Khalifa Al Suwaidi Development, Road 19
Al Bateen
+971 (0)2 495 8200
www.embassyofireland.ae

KENYA

Embassy of Kenya in Abu Dhabi
Al Manhal/Falah Street No. 9
Khalidiya
+971 (0)2 666 6300
abu_dhabi@mfa.go.ke

Kenya Consulate General in Dubai
Villa No. 5, Jumeirah 2, 15 Street
+971 (0)4 342 8111
dubai@mfa.go.ke

JAPAN

Embassy of Japan in Abu Dhabi
Mubarak bin Mohammed Street
+971 (0)2 443 5696
embjpn@ab.mofa.go.jp

Consulate-General of Japan in Dubai
World Trade Center, 28th Floor
+971 (0)4 331 9191
dubai@du.mofa.go.jp

NETHERLANDS

Dutch Embassy in Abu Dhabi
Al Masood Tower, 6th floor
Sheikh Hamdan Street
+971 (0)2 695 8000
abu@minbuza.nl

Dutch Consulate-General in Dubai
Habtoor Business Tower, 30th floor
+971 (0)4 440 7600
dba@minbuza.nl

PHILIPPINES

Embassy of the Republic of the Philippines
Street No. 8, Sector 4 2-23, Plot 51
Al Qubaisat, Abu Dhabi
+971 (0) 2 639 0006
auhpe@philembassy.ae
Emergency: +971 (0)50 207 9988

Consulate General of the Philippines in Dubai
Villa No. 9, Street No. 16
Al Hamriya, Deira
+971 (0)4 266 6285
pcgdxh@eim.ae

PORTUGAL

Embaixada de Portugal em Abu Dhabi
Marina Park Office, Villa A42
+971 (0)2 650 5541
mail@abudhabi.dgaccp.pt
abudhabi@mne.pt

QATAR

Embassy of Qatar in Abu Dhabi
Diplomatic Area, Sector 30
+971 (0)2 449 3300
abudhabi@mofa.gov.qa

The Consulate General of Qatar in Dubai
Consular Complex Area, Um Hurer 1
+971 (0)4 396 0444
dubai@mofa.gov.qa

RUSSIA

Embassy of Russian Federation in Abu Dhabi
Khalifa Street, East Plots 65/67
+971 (0)2 672 1797
rusembuae@gmail.com

Consulate General of Russia in Dubai
Umm Al Sheif, 6B Street, Villa 21
+971 (0)4 328 5347
condubai@hotmail.com
Emergency: +971 (0)50 454 7754

SINGAPORE

Embassy of Singapore in Abu Dhabi
Villa No. 642/2, Khaleej Al Arabi Street
+971 (0)2 222 2083
singemb_auh@sgmfa.gov.sg

Consulate-General of Singapore in Dubai
Villa No. 124, Street 30D, Al Satwa
+971 (0)4 321 9498
singcg_dxb@sgmfa.gov.sg

SLOVAKIA

Embassy of Slovakia in Abu Dhabi
P.O. Box 63545
+ 971 (0)56 620 2560
www.mzv.sk/abudhabi

SWEDEN

Embassy of Sweden in Abu Dhabi
Al Otaiba Tower, 12th Floor
Zayed the First Street
+971 (0)2 417 8800
ambassaden.abu-dhabi@gov.se

SWITZERLAND

Embassy of Switzerland in Abu Dhabi
Centro Capital Center Building, 17th floor
Khaleej Al Arabi Street
+971 (0)2 627 4636
adh.vertretung@eda.admin.ch

Consulate General of Switzerland in Dubai
Dubai World Trade Center
+971 (0)4 329 0999
dai.vertretung@eda.admin.ch

UGANDA

Embassy of the Republic of Uganda
Villa No. 28 West 17/02
Al Falah Street 9, Al Bateen, Abu Dhabi
+971 (0)2 665 9931
info@ugandaembassyuae.com

UNITED KINGDOM

British Embassy Abu Dhabi
Khalid bin Al Waleed Street
+971 (0)2 610 1100
consular.UAE@fco.gov.uk

British Embassy Dubai
Al Seef Road, Bur Dubai
+971 (0)4 309 4444
consular.UAE@fco.gov.uk

UNITED STATES OF AMERICA

Embassy of the United States in Abu Dhabi
Embassies District
+971 (0)2 414 2200
AbuDhabiACS@state.gov

United States Consulate General in Dubai
Al Seef and Sheikh Khalifa bin Zayed roads
+971 (0)4 309 4000
DubaiWarden@state.gov

just add sand.



DISCRAFT
THE WORLD LEADER IN DISC SPORTS

MEETINGS AND EVENTS

Captains' Meeting

Captains from each team are requested to attend the Captains' Meeting. Important information, including rule changes, will be communicated at this time.

Sunday, March 8

Meet at the Hilton Hotel

11 a.m.

Spirit Captains' Meeting

Elected Spirit Captains from each team must attend this meeting.

Sunday, March 8

Meet at the Hilton Hotel

12 noon

WFDF Coaching and Development Workshop

By invitation only. The workshop will allow invited participants from each WCBU2015 country to learn from global leaders, as well as hear early-stage plans and provide feedback on several new WFDF programs. Special thanks to Five Ultimate for their generous support of this event!

Tuesday, March 10

Wavebreaker Restaurant, Hilton Hotel

6:30 to 9 p.m.

RISE UP Coaching Clinic

Pre-registration was required. The session will include practical and classroom-based elements and provide delegates with the skills to be able to take modern techniques back home to their team or nation.

Saturday, March 14

Nad Al Sheba Sports Complex

10 a.m. to 4 p.m.

The voice of ultimate.

SKYD
magazine

skydmagazine.com

USING THE INTERNET

Providing free, plentiful, and fast Wi-Fi Internet access for more than 1,000 people has proven to be challenging.

We believe that our setup will work but we kindly request that ALL players be considerate with bandwidth. Please do NOT download, or stream, videos, music, or download large files while you are on the WCBU Wi-Fi.

Login details will be available in the main tent.

This will be the first World Championships where the daily printed newsletter has been replaced by a 24/7 digital player-focused newsfeed. This mini website was made especially for access on mobile phones and includes communication from the Tournament Director, as well as links to rule and Spirit documents, local information, important phone numbers, latest scores, upcoming games, reports by Get Horizontal and photography by UltiPhotos. Bookmark it for your six days in Dubai: news.wcbu2015.org.

If you do not have a mobile phone with a browser you can always check the TV screens in the main tent. Those will carry most of the same information.

Layout for the Camera!

*Search by team/division

*Daily highlights



UltiPhotos.com



UltiPhotos



@UltiPhotos

Official Photographers of WCBU

VENUE

PITCHES

Ten pitches will extend the length of JBR Beach. The Arena is located at the far northern end of the beach, with pitches 2-10 running in front of the Ritz-Carlton Hotel. The pitches can be accessed by two entrances from JBR The Walk, one of which runs through the sand parking lot on the northern end of the venue and enters onto the Athlete's Village. A second entrance runs between the Ritz-Carlton and the Meydan Beach Club.

The arena (Pitch 1) can seat 1,000 spectators. The game schedule for the arena - and all games - will be posted in the main tent and online at news.wcbu2015.org.



AMENITIES

Each pitch will have a water station, and teams will also have tents provided at each pitch. Rubbish bins will be located at each field, and recycling stations will be spread throughout the venue.

Toilets are located near the Athlete's Village.

Limited parking is available at the northern end of the venue in the sand lot, though using public transport, walking or taking shuttle buses is strongly encouraged.

WARM-UP AREAS

Designated warm-up areas are located in three locations on JBR Beach (please consult map on Page 3 for locations). Players are encouraged to use the specified areas to avoid disturbing non-spectator beach-goers and tourists. Please be respectful of those using the beach.

Teams can also consult the field schedule to check on availability of pitches.

ATHLETE'S VILLAGE

The Athlete's Village, near Pitch 6 at the north end of the venue, will feature a family tent, operations centre, First Aid and physiotherapists, a Five Ultimate merchandise tent, the Red Bull entertainment zone and informational areas from WCBU2015 sponsors and partners.

MERCHANDISE TENT

Five Ultimate will be showcasing a wide variety of products at this event, including on-field and off-field apparel, accessories, and some products that are brand new in 2015. Our booth will also feature a lounge space where players can relax, as well as a variety of games and activities to keep people entertained. We at Five Ultimate feel a particular affinity to the beach ultimate community, whose mission and ideals align so well with our own.

FAMILY TENT

A dedicated tent and shaded area will be provided for families to escape the hubbub and midday sun in the Athlete's Village. The tent will feature a microwave, refrigerator and changing table.

LOST AND FOUND

Players are responsible for their own belongings. Any lost items should be reported to a volunteer or delivered to the Lost and Found desk immediately. This desk will be manned at all times during the tournament. Items not claimed will be posted on the website.

FOOD COLLECTION POINT

For those who purchased the tournament meal package, lunches will be pre-packed and delivered to the Athlete's Village. Meals for each team will be packaged together and must be collected between 11 a.m. and 1:30 p.m. each day.



RED BULL ENTERTAINMENT ZONE

Red Bull, the official energy drink partner of WCBU2015, will have a dedicated entertainment area in the Athlete's Village. Swing by their tent for a can of Red Bull and stay for the DJ set.

MAIN INFORMATION TENT

The operations headquarters will be located in the main information tent. In addition to the login details for the WiFi and the schedule for the day, the main tent will house our crack team of tournament professionals. If you have a question or need a clarification from a member of the Local Organizing Committee, United Arabian Ultimate, BULA or WFDF, you can probably find them here.

EMIRATES MEDICAL STUDENTS' SOCIETY

To mark International Women's Day on March 8, WCBU2015 is partnering with the Emirates Medical Students' Society to provide health check-ups that include blood pressure, glucose, and BMI testing. EMSS will also prioritize educating women about Vitamin D deficiency and bone health.

Stop by their tent in the Athlete's Village during your downtime to leave your thoughts on their comment board dedicated to messages about women in sports, WCBU, and female athletes in the Middle East.

SPORT 360°

COVERING ALL ANGLES OF SPORT IN THE UAE



 sport360.com
 [/sport360](https://www.facebook.com/sport360)
 [@sport_360](https://twitter.com/sport_360)

 arabic.sport360.com
 [/Sport360Arabiya](https://www.facebook.com/Sport360Arabiya)
 [@Sport360Arabiya](https://twitter.com/Sport360Arabiya)

MEDICAL TEAM/PHYSIOS

Our tournament Medical Team is comprised of four physiotherapists, three First Aiders, and one massage therapist. The First Aid tent is located in the Athlete's Village.

Together, the Medical Team will oversee all prevention, diagnosis, and intervention of emergency, acute or chronic injuries, and medical conditions. They will be able to assist with all medical needs and will have information available for nearby hospital/emergency rooms.

The team will provide or redirect you with any pre- and post-match services and are our emergency response team. You will find them at the First Aid station for the duration of the tournament or on a sideline monitoring a match.

First Aid supplies and ice will also be available at the First Aid tent.

Physiotherapists and the massage therapist will be available to players on a first-come, first-served basis. Priority will not be given to athletes based on division or proximity of next game.

WHAT TO DO IN CASE OF INJURY/EMERGENCY

If you require immediate assistance at one of the pitches, volunteers will be in constant communication with the Medical Team.

The general emergency number in Dubai is 999. The ambulance emergency number is 998.

If suffering from dehydration or exhaustion, seek out shade, drink plenty of liquids and consult a First Aider on-site.

Lifeguards are stationed on JBR Beach, a public beach, during the day and a flag-warning system is in place to alert swimmers to sea conditions. Please exercise caution when swimming and be aware of any warnings posted by lifeguards on the beach.

Two ambulances and four medics will be available on-site for urgent medical care. In case of emergency, patients will be transported to one of the following locations:

Lifeline Medical Centre on JBR The Walk - Less than 5 minutes from the pitches. They are located on the first floor of Al Fattan Marine Tower 2. Their number is +971 (0)4 399 1119.

Saudi German Hospital - The nearest trauma center to the beaches. It is located at Al Barsha 3, Hessa Street, off Exit 36 on Sheikh Zayed Road. The number is +971 (0)4 389 0000.

Rashid Hospital - This government hospital is located in Oud Metha. The number is +971 (0)4 219 1000 or (0)4 219 2000.

TRANSPORTATION & GETTING AROUND

The most common way to get around Dubai is by taxi, though traffic on JBR The Walk is notoriously chaotic during the afternoons and evenings. Public transport is easily accessed from the beach, with both the Metro and Dubai Tram stations within walking distance.

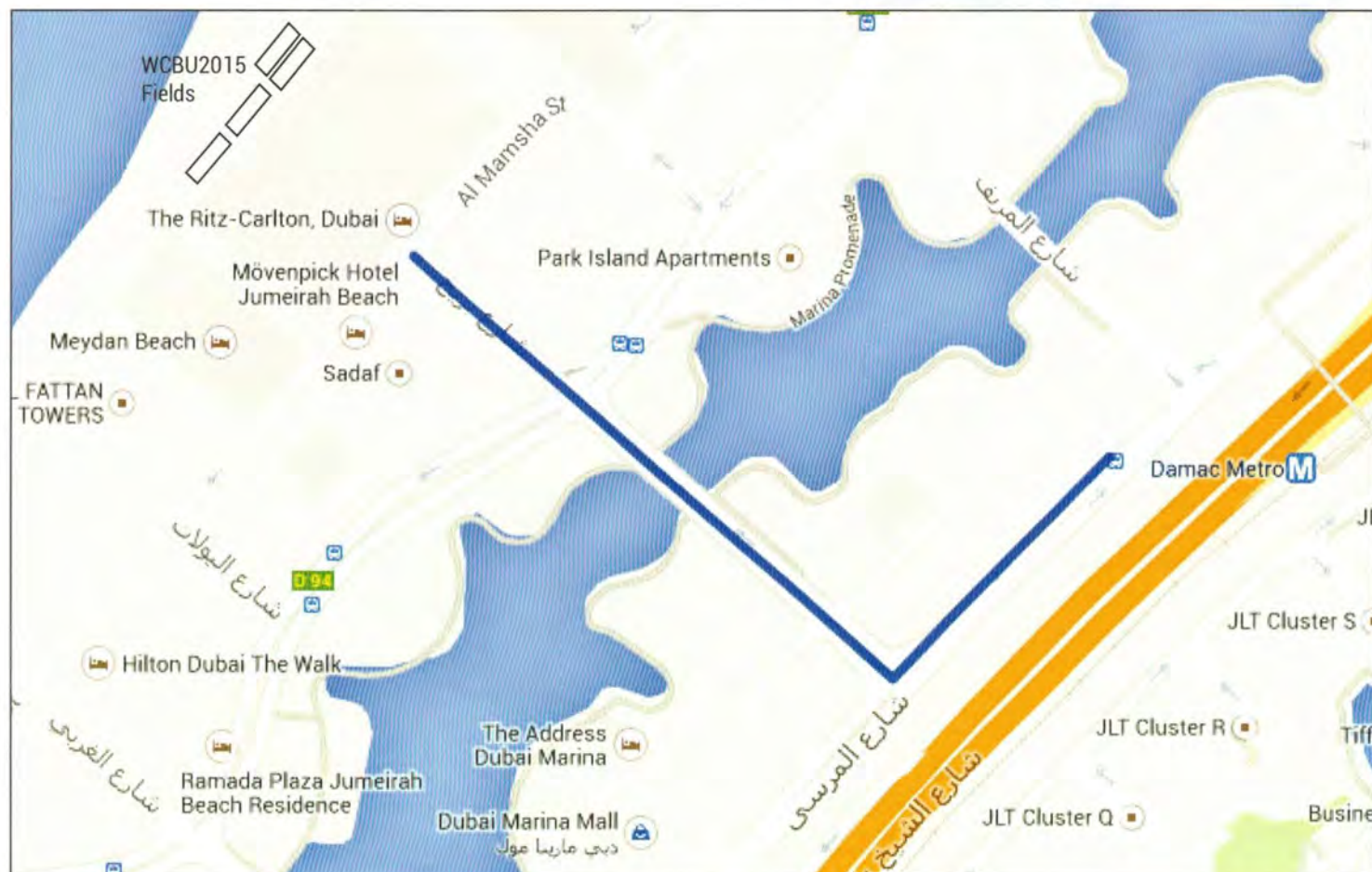
Shuttle buses will be provided for those coming from the Holiday Inn Express Internet City and the Grandeur Hotel Al Barsha. Please ensure you have the correct wristband if you intend to make use of this service.

Parking is available on the far northern end of the beach, though driving to the pitches is not recommended.

GETTING TO THE PITCHES

If traveling to the pitches by taxi, tell the driver to take you to the [Ritz-Carlton Hotel on JBR The Walk](#). Pedestrian access to the beach is located on either side of the hotel. Please do not walk through the hotel unless you are a guest there.

If coming by Dubai Metro, you can either walk or connect to the Dubai Tram. Walking will take about 15 minutes. The nearest Metro stop is [Damac Properties station](#).



If transferring to the Dubai Tram, get off at the **Jumeirah Beach Residence Tram Station 1** and walk about 8 minutes to the beach.



In order to access the Metro or Tram, you will need to purchase a Nol ticket or card. These can be purchased at the station of your departure.

The standard adult ticket price runs between 4 AED and 8.50 AED, depending on many of Dubai's 5 zones you pass. Daily passes are also available and cost 20 AED.

Transfer between the Metro and Tram is free when you tap your Nol card at the station within a half an hour of transfer. Tram fares are between 3 AED and 6 AED.

Depending on your location, taxi fares to the beach should be no more than 100 AED.

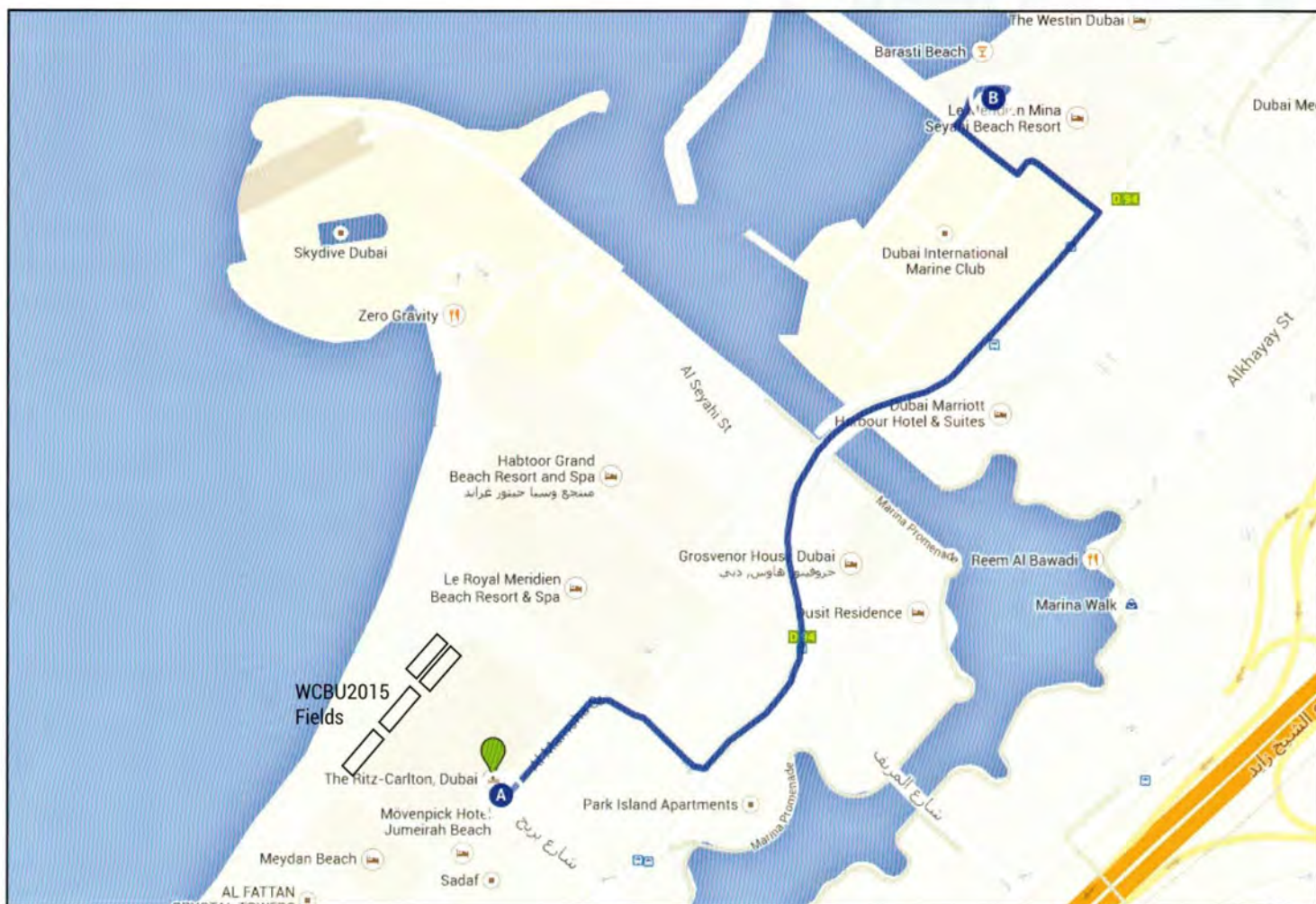


GETTING ELSEWHERE IN DUBAI

JBR Beach is nearby many restaurants, hotels, shopping centers and other amenities. JBR The Walk, the main stretch of road alongside the beach, features dozens of cafes, shops and restaurants, and supermarkets and convenience stores are located on the plaza level of Jumeirah Beach Residence (accessed by staircase directly across the street from the pitches).

Many hotels along The Walk, all within walking distance, offer drinks specials and lunch/dinner offers. We recommend checking out the Hilton, the Habtoor Grand, Grosvenor House and the Mövenpick.

The social events on Sunday, March 8 and Monday, March 9 will be at the Barasti Beach Bar. The bar is within walking distance of JBR Beach (it will take about 30 minutes), but a cab is probably preferable. For the adventurous, though, here is the best walking route:



TRIBE[®] FIT

SOCIALLY ACTIVE

Join the **Tribe!**

LEVEL 1, SILVERENE TOWERS
NEXT TO DUBAI MARINA MALL

*Dubai Marina's Largest & most
Happening Fitness & Social Club*



[facebook.com/tribefitme](https://www.facebook.com/tribefitme)

tribefit.com

Call 800 **TRIBE** (87423)

The Marina Byblos Hotel, where Societe nightclub is located, is in Dubai Marina. It is an easy 20-minute walk from the area of the beach to the hotel. For those not coming from the area of JBR, cabs will be familiar with the name of the hotel.



GETTING A TAXI

Taxis are plentiful in Dubai and can usually be flagged down on the street. At peak hours or busy times, however, it is advisable to call ahead and book a taxi. To book a taxi in Dubai, the main dispatch center can be reached at +971 (0)4 208 0808.

There are five cab franchises in Dubai. Service and fares are identical, and the different companies are distinguishable only by the color of their roofs. To book a taxi by telephone, please call one of the following numbers:

- Arabia Taxi (green top): 800 272242
- Dubai Taxi (red top): 04 208 0808
- Metro Taxi (orange top): 600 566000
- Cars Taxi (blue top): 800 227789
- National Taxi (yellow top): 600 543322
- Ladies taxi (pink top): 04 208 0808



A red light on top of the taxi indicates the cab is occupied, while a white, yellow or green generally means it is available. Some “smart taxis” feature LED signs on top that say when it is available.

Hala taxis cannot be flagged down on the road. These black and white cars say “Hala Taxi” and “Only by call” on the side.

BOOKING A CAR

The popular car booking service Uber is available in Dubai, with base fares ranging from 8 AED to 10 AED.

UberX costs .30 AED per minute or 1.75 AED per kilometer. Minimum fare is 13 AED and the cancellation fee is 13AED. UberBlack costs .80 per minute or 1.90 per kilometer. Minimum fare is 20 AED and the cancellation fee is 20 AED.

Simply use the Uber app as you would in other cities.

A similar service called Careem is also available in Dubai. You can book on their website at <https://www.careem.com/dubai/> or through their mobile app.

Rates start at 9 AED for immediate bookings on an economy car, which costs 2.25 AED per kilometer. The minimum cost is 16 AED.

For players who have opted out of the meal package, there are many food options on JBR The Walk and at hotels that line the beach, though the latter is much more expensive. The Walk extends 1.7 kilometers along the beach and features more than 300 retail outlets, so there is likely something for everyone. The establishments listed below are within walking distance of the WCBU2015 pitches.

NEARBY FOOD VENUES

- | | | |
|---------------------|------------------------|------------------------------|
| - Starbucks | - Duo Ristorante | - Kosebasi |
| - Burger Fuel | - JA Oasis Beach Tower | - Shake Shack |
| - Tim Hortons | - The Pizza Company | - Fogo Vivo |
| - P.F. Chang's | - Paul | - India Palace |
| - Chili's | - Jedoudna Lebanese | - Cucina Mia Restaurant |
| - Meydan Beach Club | - Bob's Easy Diner | - Panda Express |
| - Umi Sushi | - Zaatar w Zeit | - La Dolce Vita |
| - Scoozi | - Tche Tche Cafe | - Saladicious Deli |
| - Wagamama | - Barbecue Delights | - The Butcher Shop and Grill |
| - IHOP | - Sukh Sagar | - Cafe Baroque |

NEARBY SUPERMARKET/PHARMACY

The nearest supermarket to the pitches is Al Maya Supermarket, which is on the plaza level of Jumeirah Beach Residence - Sadaf. To access, cross the street outside the Ritz-Carlton Hotel and climb the stairs up one level. The supermarket is in that cluster of buildings.

Al Maya also has a location closer to the Hilton down The Walk, on the same level at Jumeirah Beach Residence - Bahar.

A Boots Pharmacy is located directly across the street from the pitches.

"THE BEACH"

This seaside shopping centre located just to the south of the Hilton Dubai The Walk features dozens of cafes and restaurants, the region's largest open-air beach cinema screen, cabanas on the sand and, of course, shops and stores. The Beach can be reached from the Athlete's Village by foot in less than 10 minutes.

TAGGING PICTURES, POSTS AND CODES

Players and fans are encouraged to tag their photos, stories, videos, and comments shared on social media. Tags will be widely used at live.wcbu2015.org to give fans the best possible online viewing experience.

ALWAYS USE THE HASHTAG #WCBU2015

To tag countries, use these tags (IOC codes):

#AUS – Australia
#CAN – Canada
#CUR – Currier Island
#CZE – Czech Republic
#DEN – Denmark
#FIN – Finland
#FRA – France
#GER – Germany
#GBR – Great Britain

#IND – India
#IRL – Ireland
#JPN – Japan
#KEN – Kenya
#NED – Netherlands
#PHI – Philippines
#POR – Portugal
#QAT – Qatar
#RUS – Russia

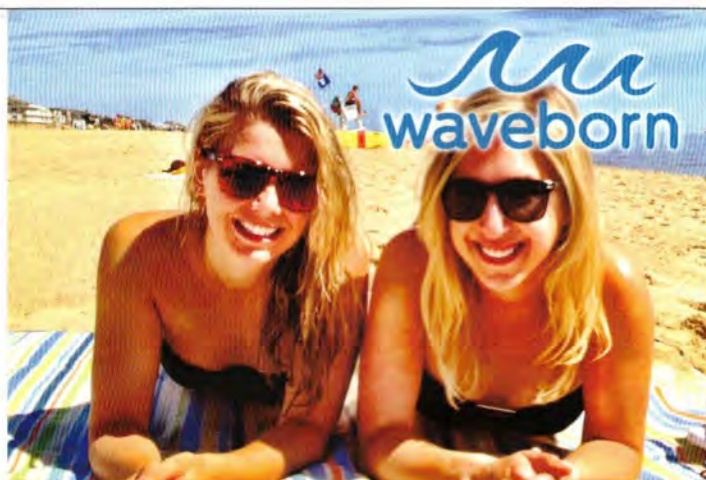
#SIN – Singapore
#SVK – Slovakia
#SWE – Sweden
#SUI – Switzerland
#UGA – Uganda
#UAE – United Arab Emirates
#USA – United States

To indicate the division, these tags are suggested:

#OPN – Open division
#WMN – Women's division
#MIX – Mixed division
#MAS – Open Masters division
#WMM – Women's Masters division
#MXM – Mixed Masters division
#GRM – Grandmaster division



Come to the
Waveborn tent.
Find the sun.
Give the gift of sight.



www.waveborn.com

Made In Italy

€100 / \$120 / 1.450

EVENT COVERAGE

TV COVERAGE

Dubai Sport TV will be covering WCBU2015 and broadcasting selected games on local television as well as livestreaming the “Games To Watch” on the JBR Arena. Send your friends, family, teammates and fans to live.wcbu2015.org for multi-camera action and professional commentary from Skyd and ESPN commentators.

LIVE SCORING

All games will have live scoring. Timekeepers at the field will input scores on their tablets, and this will be immediately available at live.wcbu2015.org. Your fans at home can cheer for you from a distance and send you good vibes.

SOCIAL MEDIA

Start of games, half-time score, and final results of all #WCBU2015 games will be automatically tweeted through the Twitter account @WCBUAllResults.

Posts on Instagram or Twitter using the codes will also appear on live.wcbu2015.org.

DAILY VIDEO HIGHLIGHTS

The Skyd team will make daily highlights available each night. Watch for spectacular action on the beach at live.wcbu2015.org.

NEWS COVERAGE

Our friends at Get Horizontal will be roaming the fields looking for the stories and keeping you, and the fans at home, up to date with their mesmerizing tales from the beach. You can check out the GH feed at live.wcbu2015.org.

PHOTOS

Our UltiPhotos partners will be on the sidelines, immortalizing your layout Ds and impossible grabs. UltiPhotos' professional event coverage will include searchable daily highlight galleries and extensive full coverage following the tournament at ultiphotos.com/wcbu/2015.

TL;DR - CHECK OUT LIVE.WCBU2015.ORG

DOWNLOADS

Scan to access 24h
Players Newsfeed



or go to:
news.wcbu2015.org

Scan for WFDF Rules
(Windows)



or go to:
bit.ly/wfdf-windows

Scan for WFDF Rules
(Android)



or go to:
bit.ly/wfdf-android

Scan for WFDF Rules
(iOS)



or go to:
bit.ly/wfdf-ios



Scan for 'Spirit of the Game' Documents



or go to:
<http://bit.ly/wfdf-sotg>

