



# EUROPEAN PREMIERE

TWO SCREENINGS OF THE FILM ON ELITE CLUB TEAM, RHINO • THEATRE HT20, NURSING BLOCK, DUBLIN CITY UNIVERSITY

ULTIMATE INTERVIEWS AND THE IRISH FLYING  
DISC ASSOCIATION PROUDLY PRESENT:

# CHASING SARASOTA

DATES 8/13 . 8/16  
DOORS 6:30PM

SCREENING 7:00PM  
Q+A 8:30PM



TICKETS AVAILABLE AT CHASINGSARASOTA.COM AND  
THE CHASING SARASOTA TABLE AT THE WJUC:

WJUC TEAM: 4.5 €  
WJUC PLAYER: 6 €

NON-WJUC TEAM: 6 €  
GENERAL ADMISSION: 7 €



# WFDF WORLD JUNIOR ULTIMATE CHAMPIONSHIPS

## CONTENTS

- 3 Welcome Note
- 4 WFDF & Ultimate in Ireland
- 6 WFDF WJUC Team 2012
- 8 Maps
- 10 General Information
- 14 Weekly Schedules
- 19 Tournament Rules
- 20 Tolka Park Finals
- 22 Getting to DCU & Around Dublin
- 24 Initial Pools



## WELCOME



Dear players, staff, guests and spectators,

On behalf of everyone involved in the local organising committee, it is my pleasure to welcome you all to Dublin for WFDF World Junior Ultimate Championships 2012! We hope this proves to be a memorable week for you all and encourages you to continue to be part of the global flying disc community.

Dominick Smyth,  
Tournament Director.



**WFDF**  
WORLD FLYING DISC FEDERATION

**WORLD**  
ULTIMATE  
ASSOCIATION

**DISCRAFT**

The World Flying Disc Federation (WFDF) is the international sports federation responsible for world governance of flying disc (frisbee™) sports, including Ultimate, Guts, and Individual Events. WFDF is a federation of member associations which represent flying disc sports and their athletes in 54 countries. WFDF is a member of SportAccord and the International World Games Association, is a signatory to the World Anti-Doping Association, and is a registered not-for-profit 501(c)(3) corporation in the state of Colorado, USA.



# WORLD FLYING DISC FEDERATION



To all participants in the 2012 WJUC:

On behalf of the World Flying Disc Federation, I would like to welcome all athletes, coaches, staff, supporters, and spectators to Dublin, Ireland for the WFDF 2012 World Junior Ultimate Championships (WJUC). We are confident you will agree that Dublin City University is the perfect setting for this premier Ultimate Championship.

WFDF is pleased to see more than 35 teams from 20 countries and some 720 players participating in this year's WJUC. There has been a juniors' world Ultimate championship for Ultimate since 1983 in Gothenburg Sweden and we now host the event every two years, most recently in Heilbronn, Germany in 2010. Alongside this year's World Championship event, the local organizers are also hosting the European Under-17 Championships. With all of this Ultimate talent coming together in one place, it should be an exciting event for all participants.

WJUC 2012 is the first WFDF sanctioned event to be held in Ireland and we would like to thank the local authorities for their support. In particular, the Tournament Organising Committee, headed by Dominick Smyth, and the Irish Flying Disc Association (IFDA) have done their utmost to prepare the best conditions for all participants. The campus facilities at the University and the close proximity of the fields and accommodation should provide many opportunities for all our young athletes to meet each other and interact in both a competitive and social setting.

I wish all teams competitive success and hope that you have an enjoyable tournament, with great memories that will last for years to come!

Very truly yours,

ROBERT "NOB" RAUCH, WFDF PRESIDENT

# ULTIMATE IN IRELAND



The Irish Flying Disc Association (IFDA) is delighted to welcome teams and supporters from all around the world to the WJUC and EYUC tournaments here in Dublin.

We are excited to have some of the best young international ultimate players in the world here, showcasing their skills, their Spirit, and the sport itself.

Like many of the nations that are competing here this week, Ireland's Ultimate community is small but growing, and in an exciting phase of development.

From a small handful of university teams, the domestic competitive scene has evolved into school, university and club teams from all around the island in Open, Womens and Mixed divisions. We've added hundreds of active adult players to our rosters in the past few years, and each year thousands of school pupils are getting their hands on discs for the first time and getting in on the action.

Having such a major tournament in Ireland will serve as another major boost to our development efforts, and we'd like to thank Dominick and his team of organisers for all their efforts in making this tournament happen.

We've received great encouragement and well-wishes from other nations over the years and it is a pleasure to have you all here, playing in our own back yard. After traveling to so many tournaments abroad, we understand that the journey isn't exactly short or convenient. Thank you all for making the effort to be here, and we hope you enjoy your visit, both on and off the fields, and leave with some great memories.

DAVID RICKARD, IFDA PRESIDENT



# WJUC 2012 CORE STAFF



**DOMINICK SMYTH,  
TOURNAMENT DIRECTOR**

Dominick has been involved in ultimate since 1998 and has represented Ireland at European and World championships since 2003. He currently competes for Ranelagh and runs his own business, Dublin Youth Ultimate, to introduce as many young people as possible to ultimate.



**MATTY HEALY,  
MEDIA & COMMUNICATIONS OFFICER**

Matty has been involved in Ultimate since 2010 and has represented Ireland at Junior level twice and captained the squad in 2011. He is currently an economics student studying in Dublin and playing for both his university and a local ultimate team.



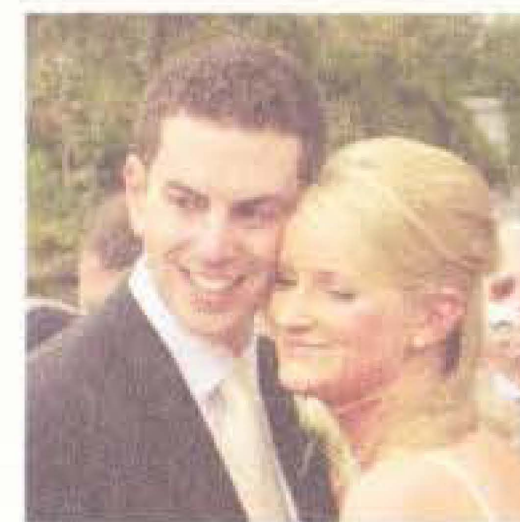
**MARK EARLEY,  
MERCHANDISE & MULTI-MEDIA COORDINATOR**

Involved in Ultimate since 2000 Mark has played for and/or captained Ireland at Euro and World Championships between 2003 and '11. He coaches one of Ireland's strongest schools program, Gonzaga Ultimate. Currently he plays with Dublin club Ranelagh. Mark works as a full-time teacher and part-time music photographer.



**ALAN BREATHNACH, VOLUNTEER COORDINATOR**

Alan has been playing Ultimate since 2006 when he started playing for DIT. He represented Ireland at WCBU 2011 and currently plays for Jabba the Huck in Mixed and Open. Alan is a Medical Laboratory Aide in MedLab Pathology.



**ROBIN GILLER, ON SITE SERVICES**

Robin has played ultimate since 2003 - originally in Cork and now in Dublin - and has represented Ireland in European and World Championships in his 8 or so years. He currently plays as a handler for Ranelagh and works as an optical design engineer for a Dublin startup.



**NATASHA HINWOOD, SOCIAL CO-ORDINATOR**

Natasha was born in Zimbabwe and moved to Ireland in 2001. She first started playing ultimate in 2007 and currently plays for the Cork based club, Rebel Ultimate. She speaks French and Spanish, loves elephants and hates catching the pull. Make sure to say hello if you see her!



**FIONA MERNAGH, VOLUNTEER COORDINATOR**

Fiona has been involved in Ultimate since 2006 and has represented Ireland at European and World championships since 2008. She currently competes for Jabba the Huck, Mixed and Women's, and works as a Quality Control Analyst in Pfizer Pharmaceuticals.



**LINDA BARRY, TEAM LIAISON**

Linda started playing ultimate in 2004. She is a handler with LMS Ultimate and has played for Ireland in the women's and mixed divisions at various international championships. She is a public policy analyst with an EU affairs think tank based in Dublin.



# GENERAL INFORMATION



## GENERAL INFORMATION

Since all participants will have breakfast and dinner in the campus restaurant, we will use the restaurant as our main information point. Daily schedules, newsletters and volunteers will be available here should you need them.

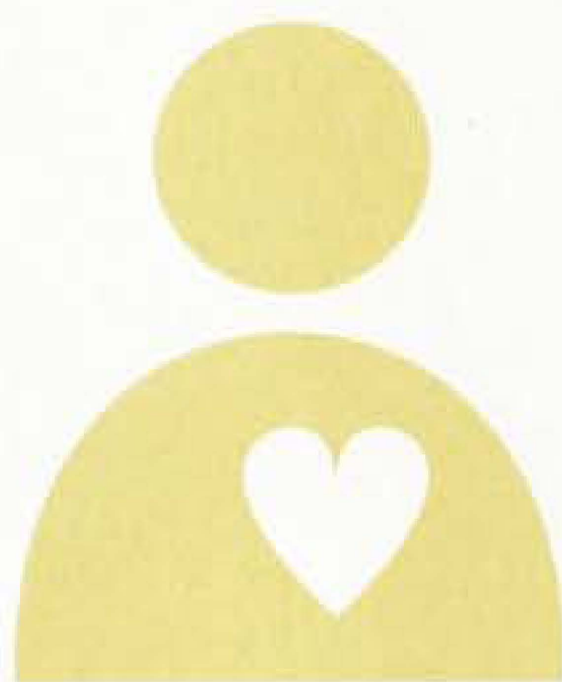
We also have a Tournament HQ at the DCU Sports Grounds (primary playing site). If you have any questions during the day that your teams mates, captains or team organisers can't answer, please feel to ask here.

As you will see, your Player Pass is also to be used for your meal plan each day. Please make sure you bring the pass with you to all meals. If you lose your Player Pass, please contact a member of staff at Tournament HQ/Restaurant and we will set about getting you a new one. There will be a charge of €10 for a replacement Player Pass.

## VOLUNTEERS

Such a huge event wouldn't be possible without the work of the volunteers. During the week you will all meet some of our volunteers who are donating their time and energy to WJUC 2012. These volunteers come from around Ireland, across Europe, as far away as USA and South Africa and all are eager to give something back to the junior ultimate community. Many of them played juniors themselves in the past and want to help everyone have as enjoyable an experience as they had.

All staff and volunteers will be wearing a WJUC T-shirt while they are working (if they don't have a competition shirt on, they are probably on a break).



**FIVE**ULTIMATE

# AWESOME COMES STANDARD

- FREE ART ASSISTANCE
- FREE SHIPPING ON TEAM GEAR
- NO SETUP FEES, NO HIDDEN COSTS
- TOP NOTCH GEAR DESIGNED BY ULTIMATE PLAYERS, FOR ULTIMATE PLAYERS
- THE BEST CUSTOMER SERVICE ON THE BLOCK
- 100% COMMITMENT TO ULTIMATE



www.fiveultimate.com  
team@fiveultimate.com  
www.facebook.com/FiveUltimate  
Hey, send us a postcard  
2610 Western Ave  
Seattle, WA 98121

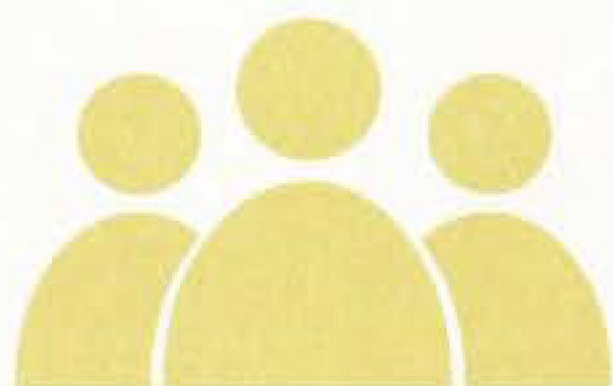




If you have any questions or need assistance, feel free to ask any of the volunteers. They are ready to help and with the variety of nationalities and languages used, should be able to take care of most things asked of them.

The task for pitch volunteers is to keep track of the scores and times during games. They are not referees or observers, but they will always have a copy of WFDF rules, which they can lend you if needed. Volunteers will also coordinate other matters during the championship, including preparing the fields, supplying water to pitches prior to each game, assisting with parties and answering everyone's questions.

The volunteers are the driving power of the tournament. Without them the event would not be possible so we hope you will join us in showing our thanks and respect for them at all times.



#### STAFF

Our core team of staff will be overseeing the operation of the championships. If a volunteer isn't able to help you, they will put you in touch with one of the staff. With 1200 people taking part, please understand if the staff can't help you immediately. They will of course do everything they can, they just might be in the middle of something else when you meet them.



#### MEDICAL

First Aid service will be available throughout the week through St. John's Ambulance. They will be visible at all times but, while they will do their best to keep an eye on all fields, they are only human. If you or a team mate need their help, just let them know and they will do what they can.

Physiotherapy and athletic support will be provided by Be Well Physio. Their team not only have years of experience with a variety of sports and patients but have also worked with a variety of ultimate players and so are familiar with the demands and requirements of our sport.

THIS IS YOUR TIME

**LIVE HARD**

**DISCRAFT**  
**ULTRA-STAR**

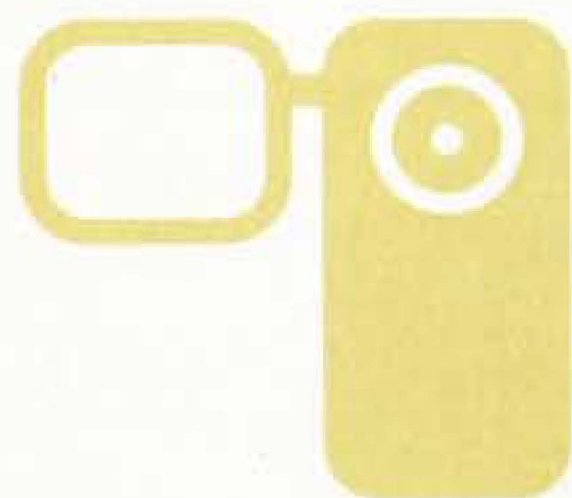
THE ULTIMATE WORLD STANDARD SINCE 1981





### MERCHANDISE

As announced previously, we are delighted to have Five Ultimate as the official merchandise supplier to WFDF World Junior Ultimate Championships 2012. The Five Lounge will be open all week as part of the Athletes Village and we encourage everyone to visit and see what's going on. With kit for sale, games to be played, prizes to be won, photos to be taken and couches to be lounged on, the Five Lounge is so much more than a shop!



### VIDEO

We hope you also already know that UltiVillage will be covering this weeks championships! They will be producing daily highlight videos throughout the week as well as extended highlights of the Junior division semi-finals, all 4 finals and a post tournament DVD available for purchase through their web site [www.ultivillage.com](http://www.ultivillage.com). Be sure to look your best and play your hardest whenever you see the cameras are rolling.



### SOCIAL

WJUC 2012 is about more than just playing. Every participant is part of the WFDF family and a member of the global ultimate community. This week in Dublin is a chance to meet other ultimate players from all over the world, make new friends and share opinions on what makes our sport so great.

Each evening we will have a few different activities planned for people to take part in. From a traditional Irish music and dancing night, through speed dating and on to the Discolympics, we hope people will join in and have a laugh.

If you don't want to join in what we have planned, that's not a problem. As you will see, there are lots of grassy areas around campus, as well as courtyards in the accommodation blocks, that you are welcome to use to do your own thing. We do ask that you treat every area with respect and listen to any requests or instructions from tournament and campus staff and volunteers. Don't let your fun ruin someone else's night.



# UltiVillage.com

IS PROUD TO BE THE  
OFFICIAL VIDEOGRAPHER OF THE

## 2012 WORLD JUNIOR ULTIMATE



## CHAMPIONSHIPS

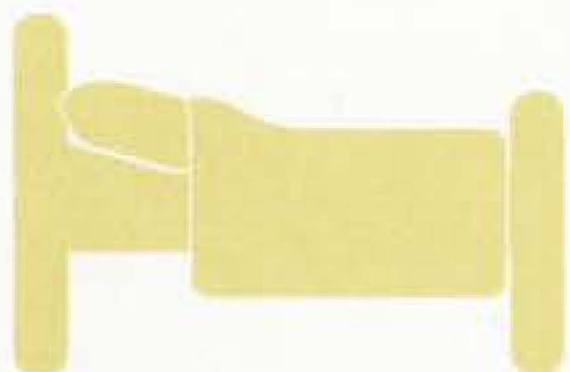


*Good luck to all athletes*

## DAILY HIGHLIGHTS - FINALS COVERAGE - EVENT DVD

TEAM PACKAGES AVAILABLE





## CLASSROOM ACCOMMODATION

The teams staying in classrooms will be using Trinity Comprehensive. A local school that has tried ultimate and is ready to help people enjoy their time in Dublin. Rules for the use of this school have been sent to all team contacts and should have been passed on to all players. Please make sure you know these rules before you arrive at the school.

If anyone breaks the rules for the use of the school their team may be removed from the school and will have to find their own alternative accommodation. Please do not put your team, and other teams, at risk.



## MEAL PLAN

The WFDF World Junior Ultimate Championships 2012 meal plan will provide breakfast and dinner to all participants. Both meals will be served in the main restaurant which is marked on campus map. Everyone will need their player pass with them at meal times as it will be used to track which meals people have already had that day.

Breakfast is provisionally scheduled to be served from 06:30 until 10:00 and dinner to follow between 17:30 and 20:30. If these times prove to be too long, short, early or late, we will work with the catering department to adjust the times as necessary. If you have a problem with the times, please have your coach or captain talk to a member of the tournament staff.

The restaurant can sit 500 customers at a time and can serve 1500 people within 1 hour. This means no one will ever have to wait long to be served or that people can simply go away and come back a little bit later.

Aside from these two meals, food vendors for Thai, Mexican and vegetarian food, along with Lotti's Wholefoods, run by Irish international ultimate player Laura McGrath, will be at the Athletes Village in the DCU Sports Grounds each day and additional food can be purchased at any of the local shops.

# TOURNAMENT RULES



WFDF World Junior Ultimate Championships and EUF European Youth Ultimate Championships will use the WFDF Rules of Ultimate, effective 2009-03-14. We will also use the Appendix, effective 2012-02-01, which include additional rules and clarifications regarding championship events. Both rules documents are available through [wjuc2012.com/rules.php](http://wjuc2012.com/rules.php).

Notable rules within the appendix include, but are not limited to:

### - A4.4. Half Time Cap:

A4.4.1. The half time cap occurs after fifty five (55) minutes of game time, if the half time target has not been reached.

### - A5. Time Limits

A5.1. A timekeeper must be appointed to monitor time and signal time warnings and violations.

### - B6. Tasks of a Game Official.

We would encourage all players and coaches, especially captains, to read this appendix document in order to be familiar with these, and other, additional rules.



# TOLKA PARK FINALS



The first final of EUF European Youth Ultimate Championships 2012 will be held on the afternoon of Friday 17th August. The second final, and both WFDF World Junior Ultimate Championships 2012 finals, will be held on Saturday 18th August in Tolka Park, home of Shelbourne F.C. in the Airtricity League of Ireland.

The stadium is reached by taking bus number 11 or 13 from Ballymun Rd - out the main gate of campus, on the right. Simply ask the driver for Tolka Park and keep an eye out for some of our tournament volunteers waiting near the bus stop.

We will have directions and maps available towards the end of the week to help everyone make it to the stadium and enjoy the finals.

**Ultimate Pendants available to buy  
on the 13th & 14th  
of August. Go to [vinqui.com](http://vinqui.com)  
and see our full-range.**



[info@vinqui.com](mailto:info@vinqui.com)

[www.vinqui.com](http://www.vinqui.com)

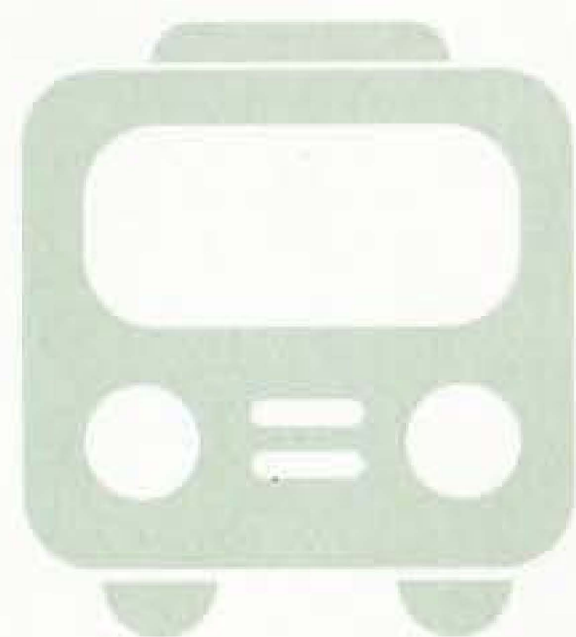
[facebook.com/vinqui](https://www.facebook.com/vinqui)

[twitter.com/vq\\_sports](https://twitter.com/vq_sports)



# GETTING TO DCU

(DUBLIN CITY UNIVERSITY)



Travel from Dublin airport to Dublin City University is quite simple and should take roughly 30 minutes. Outside the arrivals hall of the airport, you should get a Dublin (public) bus number 16 (towards Ballinteer/Kingston) or 41 (towards Lower Abbey St.). Bus numbers with a letter after them are also OK and will travel the same route.

Either bus should cost €2.15 per person but you will need to have exact change as no change will be given. It is possible to pay for more than one person at a time. Ask the driver to let you off: 16 - "at Whitehall church", 41 - "after Whitehall church".

Both busses will take the same route for 90% of the journey - a long straight road from the airport towards Dublin city centre. Bus will go over the bridge.

16 (towards Ballinteer/Kingston) - Bus will go over a bridge and continue before turning right twice. Bus will now travel along a road with shops on the right and an open field on the left. You will get off at the next stop. Walk in the same direction the bus is driving to next traffic lights. Go across this junction as if the bus had continued straight.

41 (towards Lower Abbey St.) - Bus will turn right off the bridge with a park on your left. Bus will drive past the park, past a church and a parking lot. Your stop will be the far side of the traffic lights. Turn around and walk back the direction the bus came from to the traffic lights. Turn left and cross junction.

Both - Dublin City University is roughly 1km along this road on the left hand side. We will have signs within the campus for registration. If you do not see any WJUC signs, or if you arrive early, go to DCU Campus Residence/Accommodation reception and ask to check in for WJUC.

# GETTING AROUND DUBLIN



Dublin is a very simple city with a city centre that can easily be walked across in a few hours. Dublin bus provide a reliable (well, 'fairly' reliable) service to bring anyone into and out of the city from DCU.

On the main road outside campus (Ballymun Road, the road in between the playing sites), you can take any of bus numbers 4, 9, 11 and 13. Simply ask the driver to let you off in Dublin city centre and you are ready to explore. All buses are exact fare so make sure you have change with you ready to pay when you board.

Buses back to campus go from Westmoreland Street and O'Connell Street (probably opposite where you got off the bus).

Within the city, options include bus, train and bicycle (public bike system with a credit card for deposit) - although walking is the best way to see what the city has to offer.

Local shops and take away restaurants can be found in two locations:

1. Opposite the main entrance to campus (Ballymun Road).
2. Leave campus onto Collins Avenue (entrance used when coming from airport). Turn left, then right. Shops located at end of road.

## LOCAL INFORMATION

Dublin City University is one of Ireland's newest universities and is located within a highly residential area. Outside the gates of campus are local businesses, houses and communities. We are confident you will all be respectful of local residents.

The area to the north of campus, past the school where people are sleeping, used to be a bad part of Dublin. Times are changing since then and people are moving on. We do, however, encourage everyone to use common sense when out and about as a team. Be respectful to local residents and they will do the same to you.



# INITIAL POOLS

JUNIOR OPEN				
	A	B	C	D
1	United States of America	Canada	Germany	Austria
2	Australia	Great Britain	Italy	Colombia
3	France	Sweden	Belgium	Japan
4	Chinese Taipei	Ireland	Russian Federation	Israel
5	Finland	Latvia	New Zealand	Switzerland
JUNIOR WOMEN				
	A	B	C	
1	Colombia	Canada	United States of America	
2	Germany	Italy	Australia	
3	Japan	Sweden	Great Britain	
4	Ireland	France	Israel	
5	Finland	Latvia	Russian Federation	
6	Great Britain	Germany	Austria	
U17 OPEN				
	A	B		
1	Germany	Great Britain		
2	France	Israel		
3	Austria	Italy		
4	Switzerland	Ireland		
5	Ireland B			
U17 GIRLS				
	A			
1	Great Britain			
2	Germany			
3	Austria			





**AWESOME COMES STANDARD**


- FREE ART ASSISTANCE
- FREE SHIPPING ON TEAM GEAR
- NO SETUP FEES, NO HIDDEN COSTS
- TOP NOTCH GEAR DESIGNED BY ULTIMATE PLAYERS, FOR ULTIMATE PLAYERS
- THE BEST CUSTOMER SERVICE ON THE BLOCK
- 100% COMMITMENT TO ULTIMATE



**Good luck to all the athletes !**

**2012 World Junior Ultimate Championships**

**2012 European Under 17 Ultimate Championships**



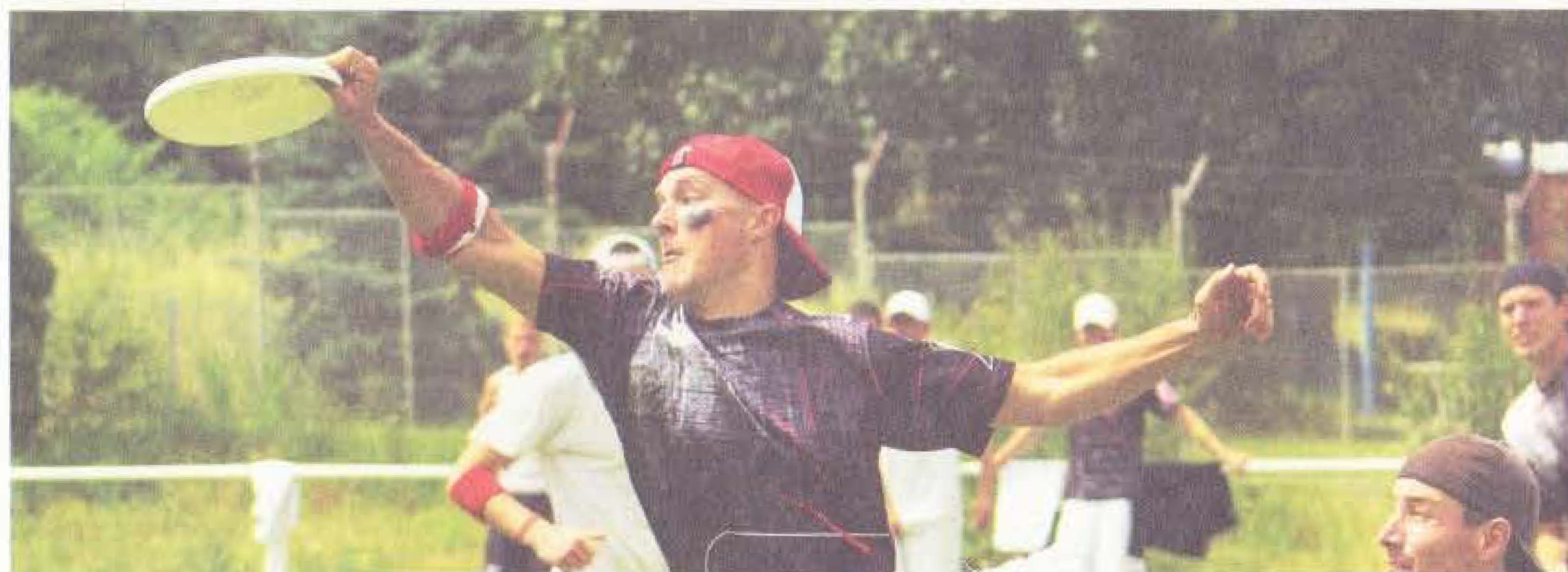
UltiVillage.com





PLAY BETTER ULTIMATE  
COACH WITH CONFIDENCE

Drills, Skills, and Strategies designed to improve  
the way you practice and play Ultimate



Designed by world champion players with a collective 75 years playing and coaching Ultimate. The UltiCards team has 5 WUGC Gold Medals, 1 World Games Gold Medal, 2 USAU Championships, 1 WJUC Gold Medal, 4 CUC Championships, 1 Callahan winner, and 3 Coaches at WJUC 2012!

Our collective knowledge and passion for the sport went into making UltiCards the premier training resource for Ultimate teams, coaches, and players looking to improve their games.

TAKE YOUR GAME TO THE NEXT LEVEL



Visit our website and get yourself a set of UltiCards today



**ULTICARDS.NET**

**GOOD LUCK AT  
WJUC 2012!**





